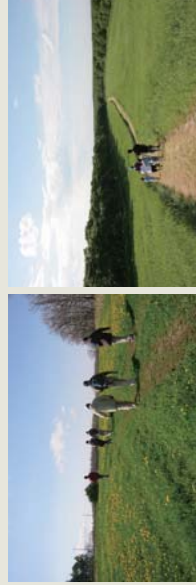


On Nemuro Footpaths

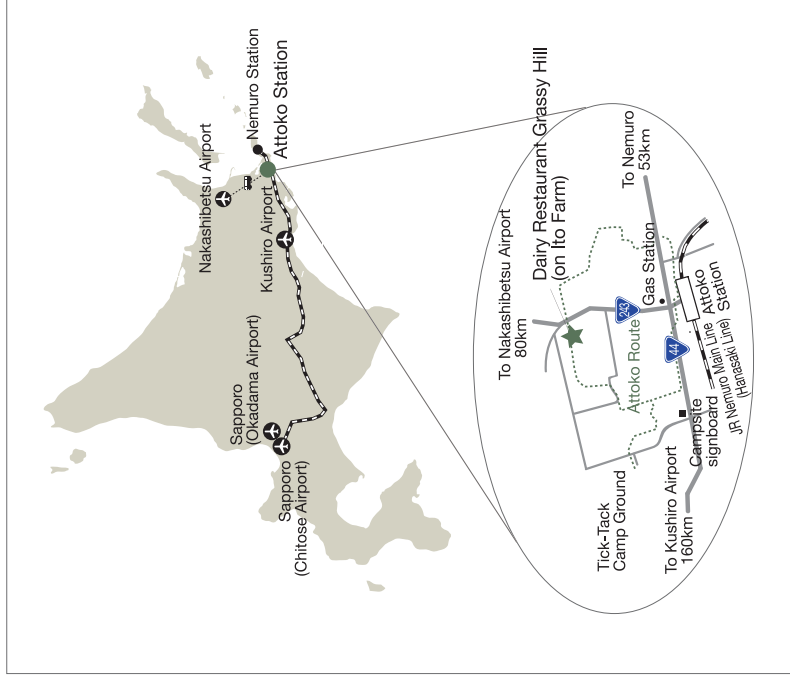


Nemuro-shi is located on the easternmost end of Hokkaido and is known for being the city with the earliest sunrise in Japan. While the city's coastal location provides it with an active fishing industry, the northwestern side of Nemuro has developed extensive dairy lands. A profusion of flowers bloom during the cool summer months as if in praise of the brief growing season. In winter, the face of Nemuro is transformed, with an endless blanket of white snow covering the land.

Footpaths are pedestrian roads that originated in the United Kingdom. Pedestrians are given legal right of way so they can freely pass through privately owned lands such as farms and woods. Nemuro followed this example and began laying down the Nemuro footpath in 2002. Footpaths offer a wealth of intimate and memorable experiences in stunning places inaccessible by car: watch the humble green carpet of the pastures gently transform as you walk along into a profusion of different plants and flowers. Our wish is to welcome as many visitors as possible to the Nemuro Footpath, and introduce them not just to Nemuro's beautiful scenery firsthand, but also to its history, its industry, and the culture and philosophy of the people who live there.



ACCESS



■ From Tokyo
 Tokyo (Narita Airport) → Train/Bus → Tokyo (Haneda Airport) → Airplane → Kushiro Airport → Bus → Kushiro Station → Train → Attoko Station → Bus (Nemuro Kotsu) → Ito Farm
 Tokyo (Narita Airport) → Train/Bus → Tokyo (Haneda Airport) → Airplane → Nakashibetsu Airport → Bus (Nemuro Kotsu) → Ito Farm

■ From Sapporo
 Sapporo (Chitose Airport) → Airplane → Kushiro Airport → Bus → Kushiro Station → Train → Attoko Station → Bus (Nemuro Kotsu) → Ito Farm
 Sapporo (Chitose Airport) → Train → Sapporo Station → Bus → Sapporo (Okadama Airport) → Airplane → Nakashibetsu Airport → Bus (Nemuro Kotsu) → Ito Farm

For travel queries and information on how to obtain route maps, please refer to this site

<http://www.nemuro-foottourism.com/>

株式会社
AB-MOBIT

Dairy Farmer Group AB-MOBIT office (On Ito Dairy Farm)
 Ito Farm, Meikyo
 101 Meikyo, Nemuro-shi, Hokkaido, 086-0061
 TEL:+81-153-26-2181
 FAX:+81-153-26-2141

© Nemuro Inbound Green Tourism Promotion Council



NEMURO FOOTPATH

Footpaths located on Japan's easternmost point.



WHY NOT ENJOY A WALK ALONG
 A BRITISH-STYLE FOOTPATH?
 TAKE IN BLISSFUL SURROUNDINGS WHERE
 PEOPLE ARE UNITED WITH THE
 LANDSCAPE AS YOU FOLLOW ALONG
 THE PATH OF THE REGION'S HISTORY
 AND NATURE.

株式会社
AB-MOBIT